

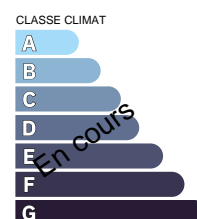
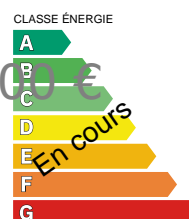
Réf. 9220 - VIAGER OCCUPE - MENTON (06)



Contribution : 57,500 € / Pension : 1,200 €

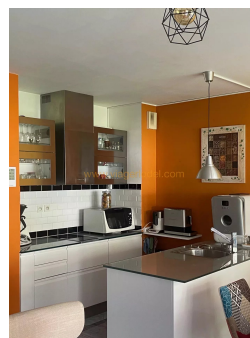
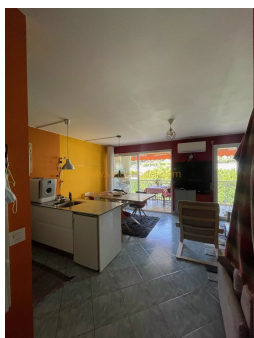


Etude Lodel - Nice
62 rue Gioffredo
06000 Nice - France
Phone : +33 4 93 80 75 24
Fax : +33 4 93 13 08 40



Not contractual information

Réf. 9220 - OCCUPIED LIFE ANNUITY - MENTON (06)



Etude Lodel - Nice
62 rue Gioffredo
06000 Nice - France
Phone : +33 4 93 80 75 24
Fax : +33 4 93 13 08 40